

CONTROL SYSTEM LABORATORY

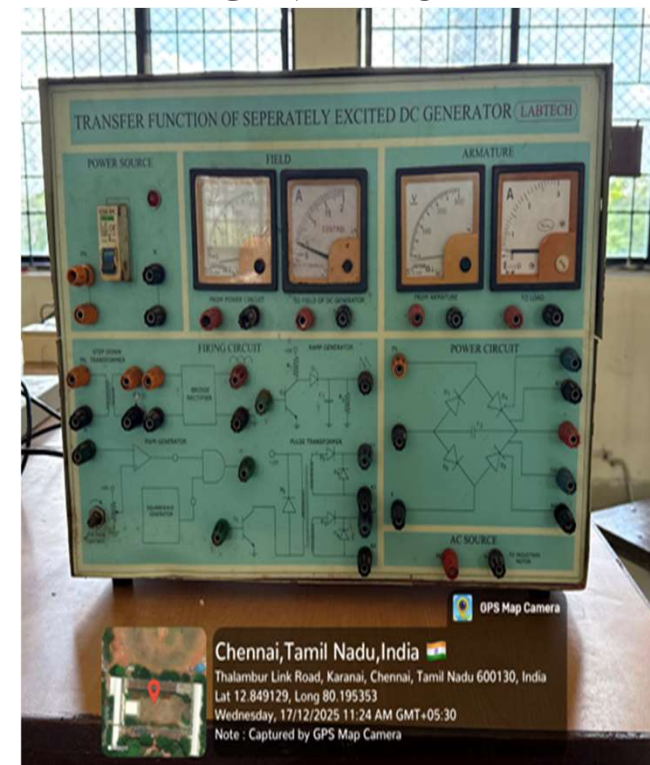
DC MOTOR



AC SERVOMOTOR



SEPARATELY EXCITED DC GENERATOR



CONTROL SYSTEM LABORATORY

ORFICE METER TRAINER



T.F of DC MOTOR – GENERATOR



DC MOTOR POSITION CONTROL

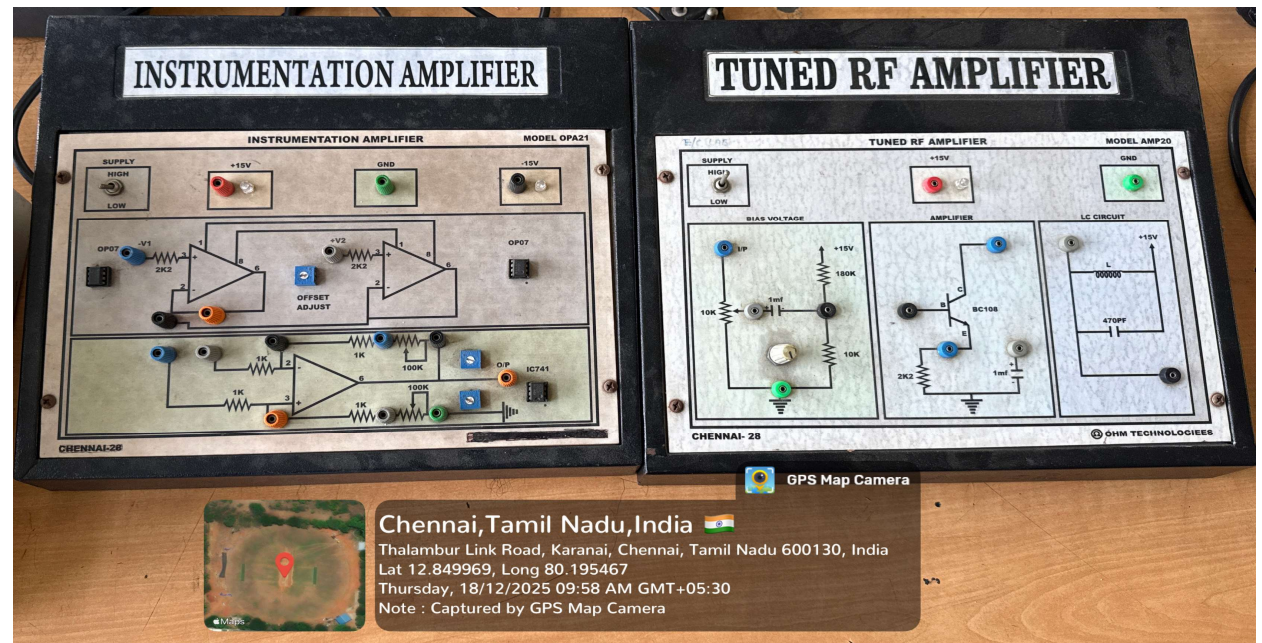


MEASUREMENT AND INSTRUMENTATION LABORATORY

DE-SAUTY BRIDGE



INSTRUMENTATION AMPLIFIER AND TUNED RF AMPLIFIER

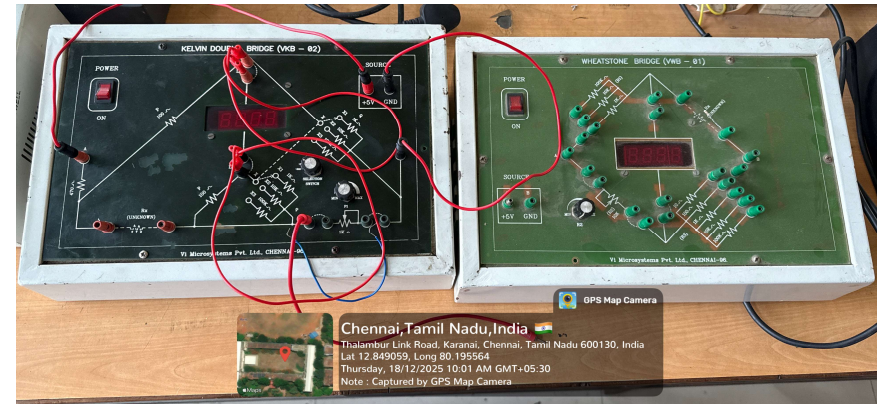


MEASUREMENT AND INSTRUMENTATION LABORATORY

KELVIN DOUBLE BRIDGE & WHEATSTONE BRIDGE



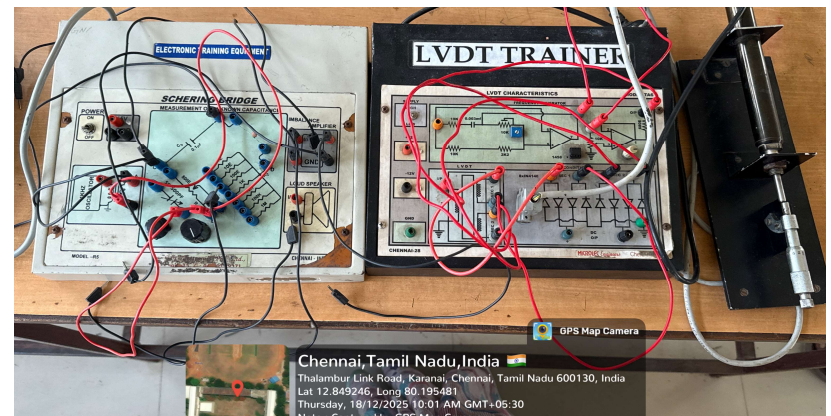
MAXWELLS BRIDGE AND ANDERSON BRIDGE



D TO A CONVERTER & A TO D TRAINER KIT



SEHERING BRIDGE & LVDT TRAINER

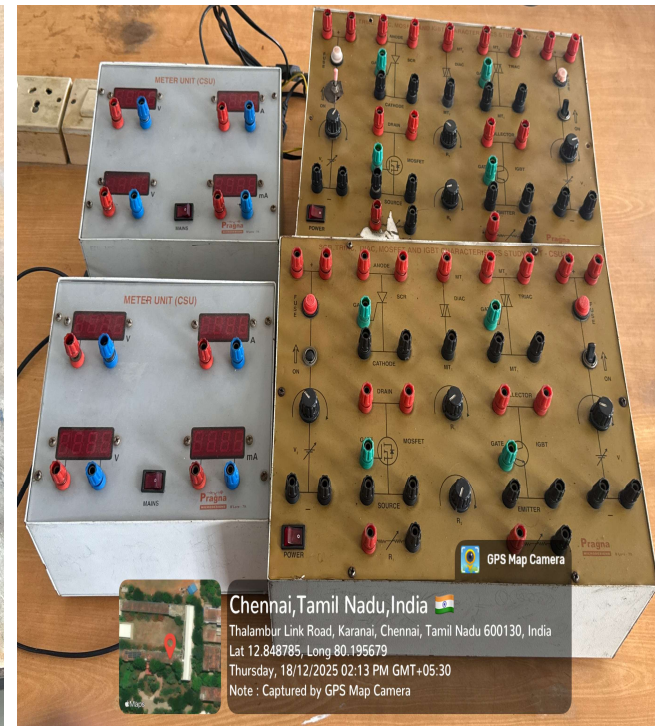


POWER ELECTRONICS LABORATORY

- 1. ANALOG CATHODE RAY OSCILLOSCOPE
- 2. DIGITAL STORAGE OSCILLOSCOPE

AC PHASE CONTROL – SCR, DIAC & TRIAC

SCR DIAC TRIAC MOSFET & IGBT

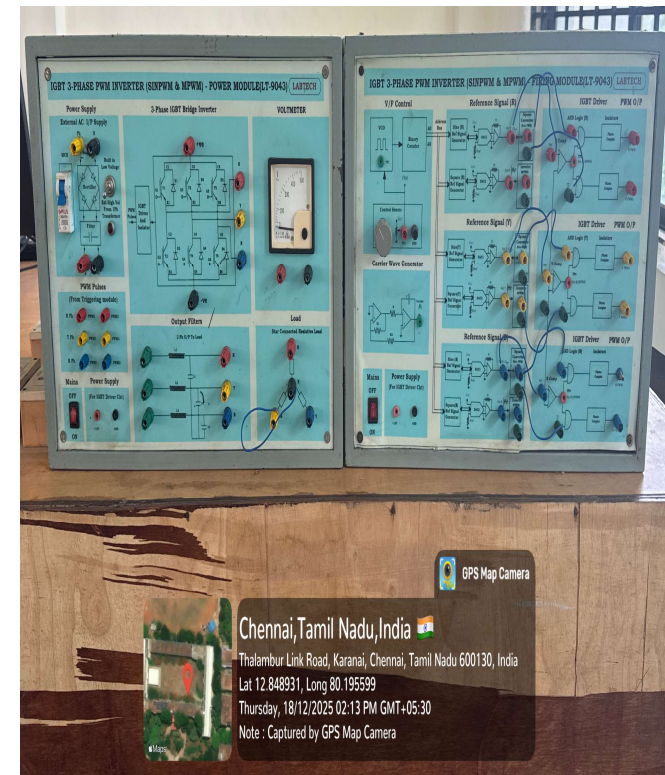


POWER ELECTRONICS LABORATORY

1. MOSFET STEP UP/DOWN CHOPPER
2. IGBT – PWM CHOPPER

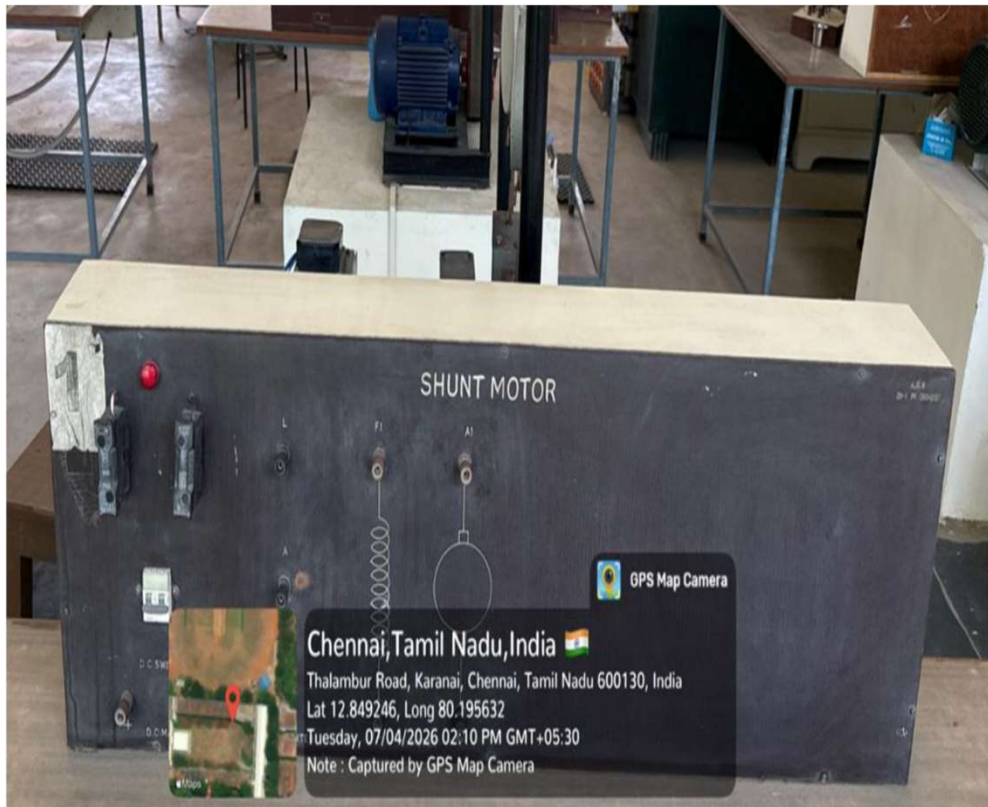
1 PHASE HALF & FULLY CONTROLLED CONVERTERS

IGBT 3 PHASE PWM INVERTERS



ELECTRICAL MACHINES – I LABORATORY

SHUNT MOTOR



COMPOUND GENERATOR

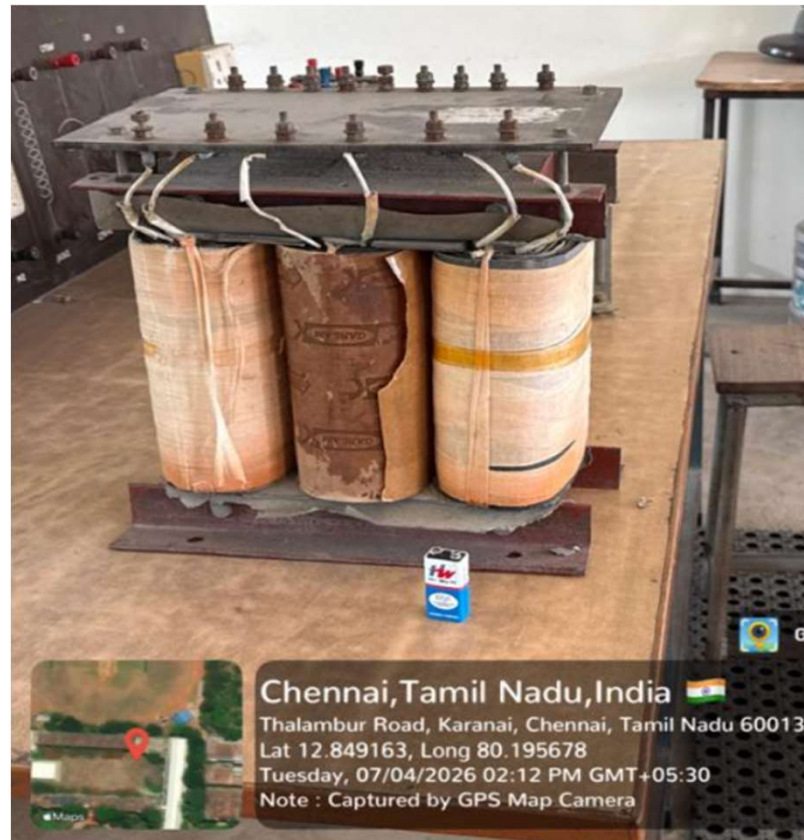


ELECTRICAL MACHINES – I LABORATORY

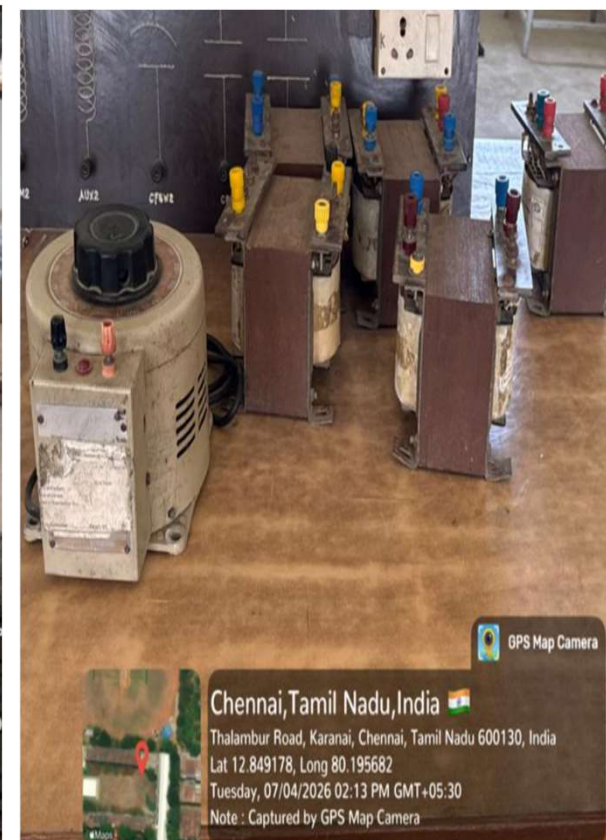
COMPOUND MOTOR



THREE PHASE TRANSFORMER

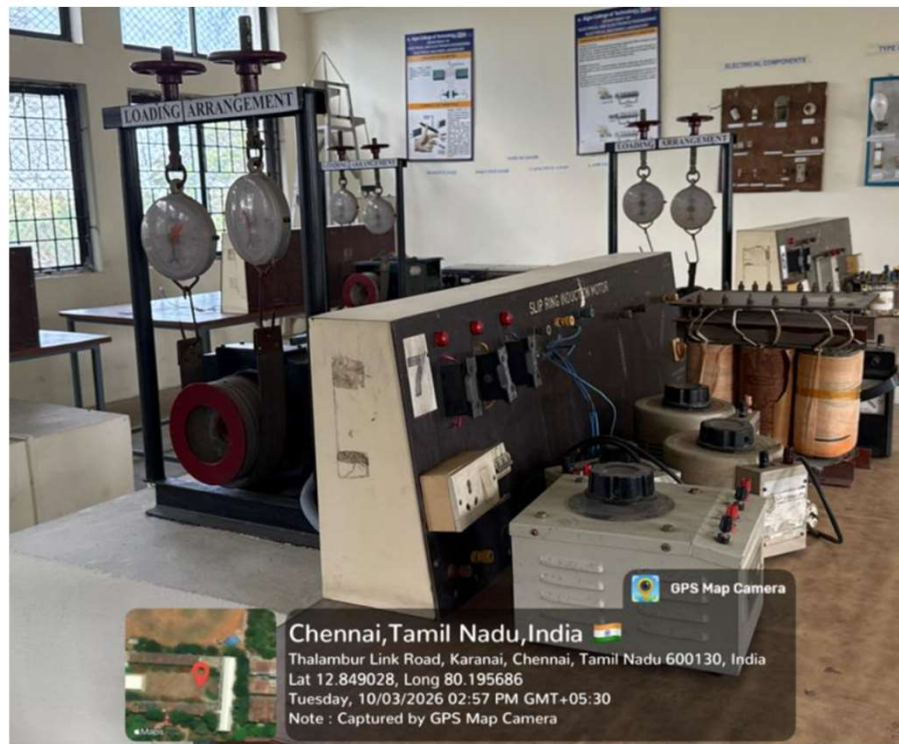


AUTOTRANSFORMER

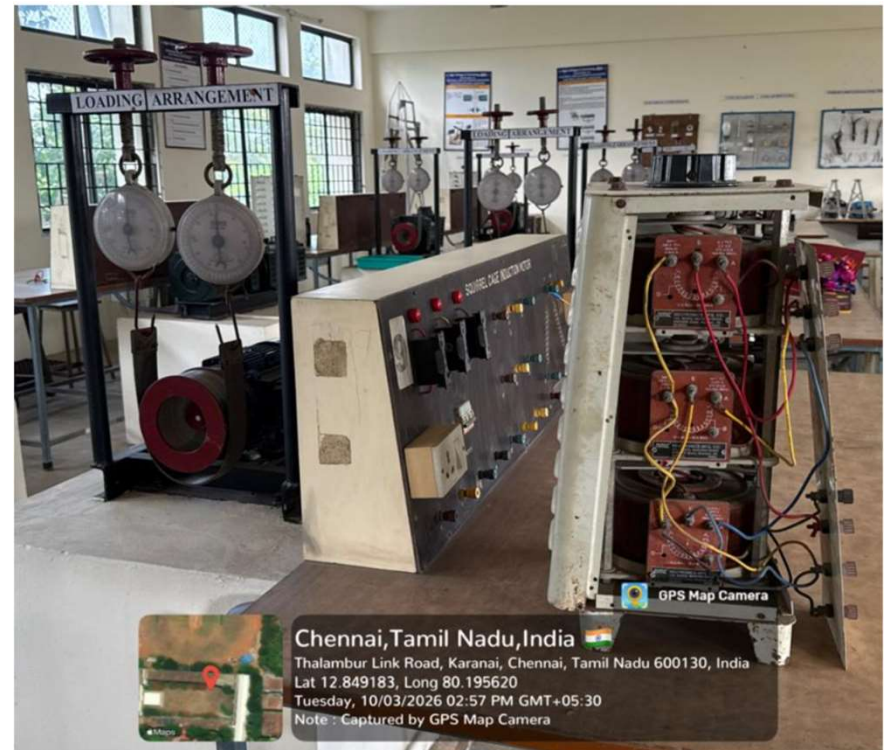


ELECTRICAL MACHINES – II LABORATORY

SLIP RING INDUCTION MOTOR

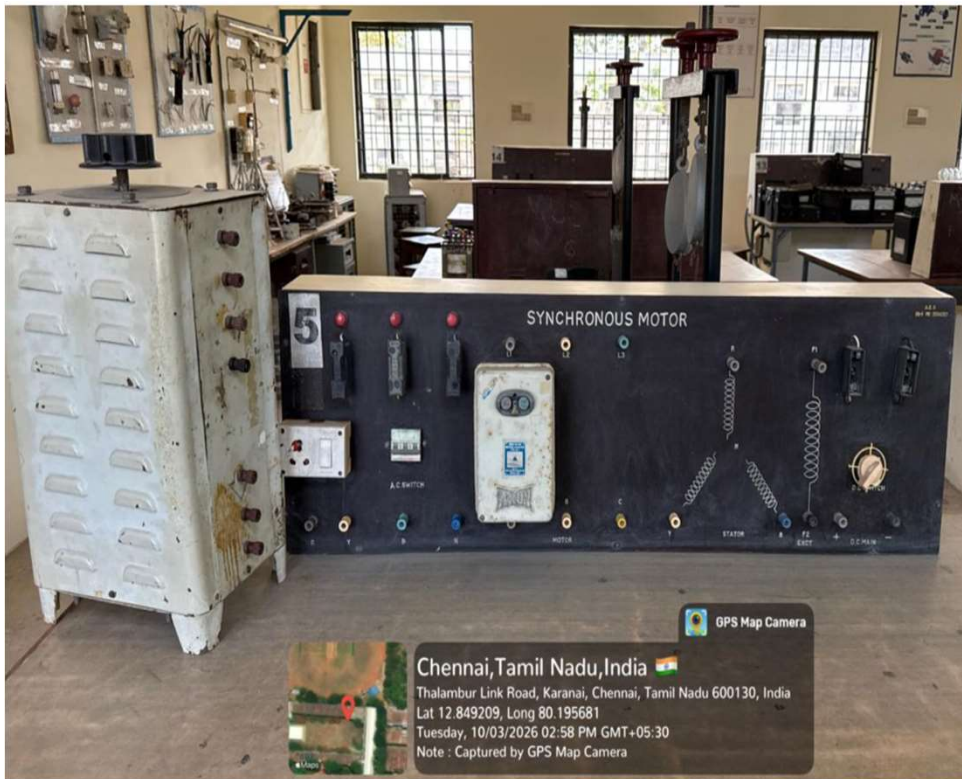


SQUIRREL CAGE INDUCTION MOTOR

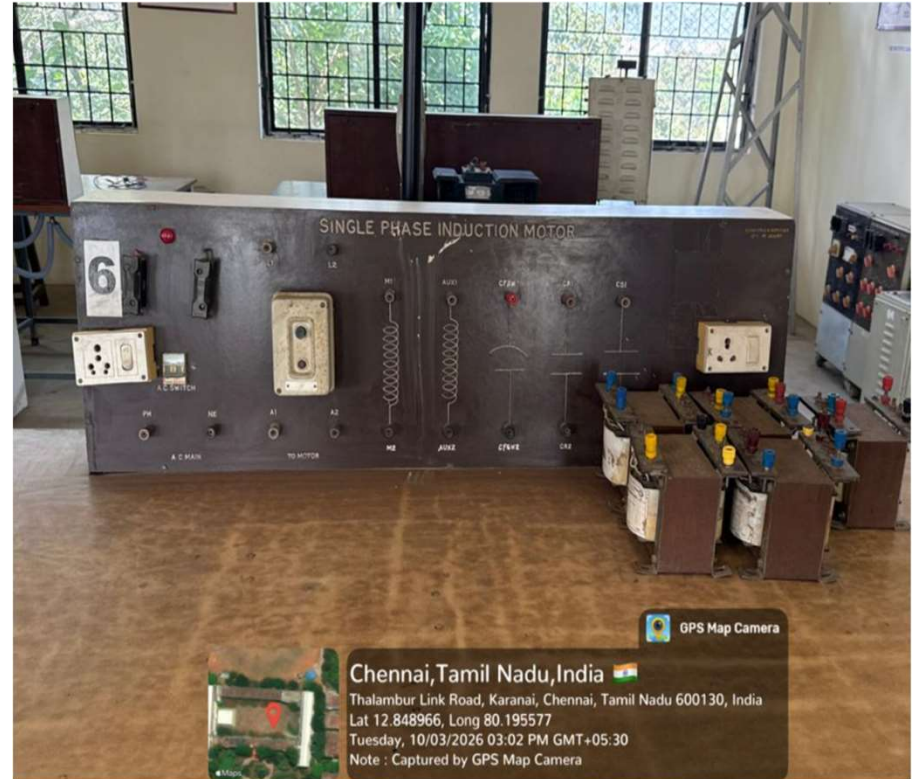


ELECTRICAL MACHINES – II LABORATORY

SYNCHRONOUS MOTOR

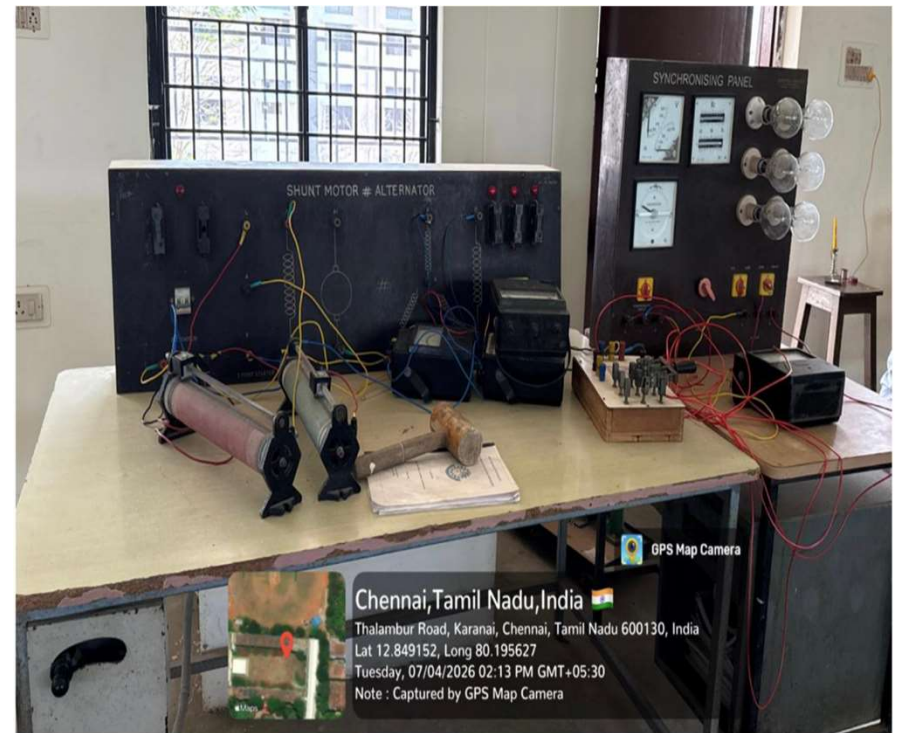


SINGLE PHASE INDUCTION MOTOR



ELECTRICAL MACHINES – II LABORATORY

SHUNT MOTOR - ALTERNATOR



ENGINEERING PRACTICES LABORATORY

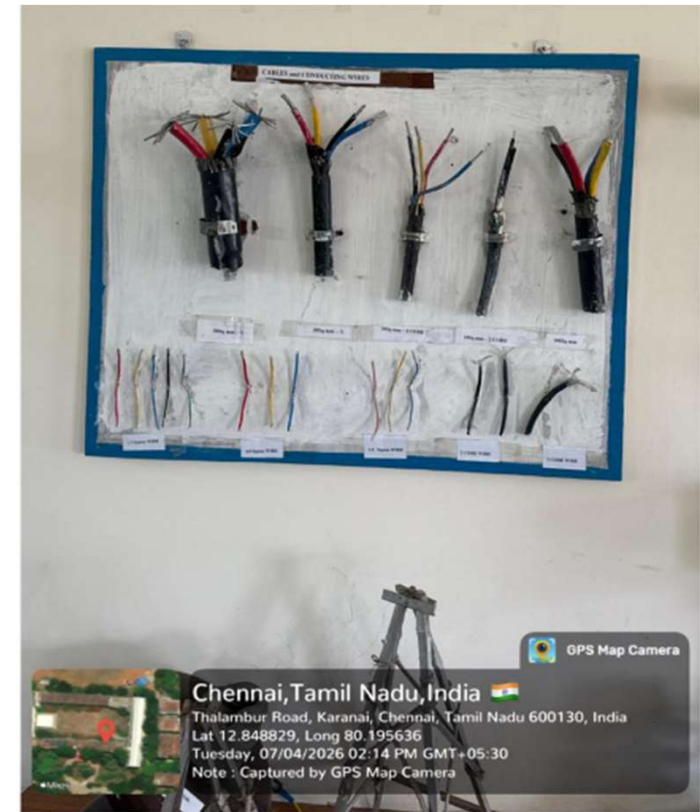
ELECTRICAL COMPONENTS



TYPES OF LIGHTS & SWITCHES



CABLES AND CONDUCTING WIRES



SOLAR PANEL



WIND MILL



SOLAR INVERTER



SOLAR WATER HEATER



RES LABORATORY

WIND AND SOLAR ENERGY GENERATION



RES LABORATORY

